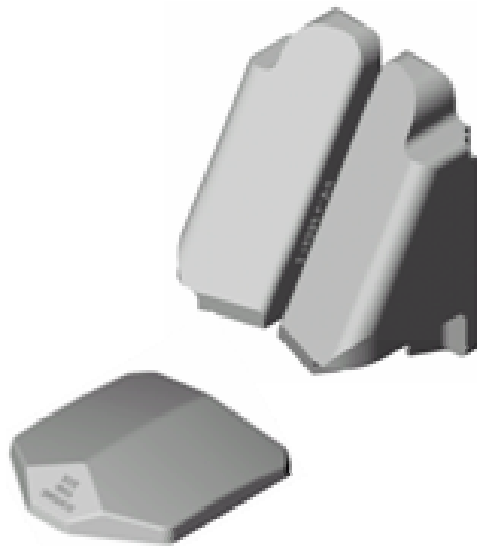


Product Bulletin

August 2006

Split Wedge Maintenance Advantage

The Barber Split Wedge is easy to install and maintain.
For all your S-286 applications - Just set it, and forget it!



Years of experience have shown that high quality replaceable steel pocket inserts and side wall wear plates provide the most durable, reliable, and economical means of maximizing performance and protecting your bolster casting investment. Our pocket inserts and wear plates install quickly and securely, and for new applications, they come pre-installed on SCT S-2-HD Bolsters.

For most cars, the first application will also be the last, because our parts will last the life of the bolster on all but the most used cars. And, for the most used cars, one repair will last the rest of the life of the bolster.

For a minimal investment per pocket, you can add years to the life of a bolster. And, when the inserts and plates have done their job, simply replace them with new. In the process your pockets will be restored to new condition without the need for any difficult and costly M-214 weld build-up and grind square-up of worn surfaces.



Ask your SCT Sales Manager about the maintenance advantage of the S-2-HD Barber Stabilized Truck with Barber Split Wedge.

